

# HYMER



# Hymermobil B-Class ModernComfort I – innovative, safe and lightweight

The next generation of motorhomes from the strong partnership between Mercedes Benz and HYMER

## **Lightweight yet stable semi-integrated vehicle body with enhanced safety and comfort.**

The Hymermobil B-Class ModernComfort is the latest result of the successful partnership between Mercedes-Benz and HYMER. The vehicles of the ModernComfort series are the only motorhomes to date in which a specially developed chassis cowl from the new Mercedes Benz Sprinter is merged with a chassis made by a motorhome manufacturer. Thanks to a combination of the award-winning HYMER SLC chassis, the renowned PUAL technology and the GRP lightweight floor, this new generation of motorhomes combines an especially light and stable body with improved safety and driving comfort.

## Characteristics

---

Weight: 3,500 - 4.500 kg

---

Length: 6,99 - 7,39 m

---

Width: 2,29 m

---

Height: 2,96 m

---

Berths: 4 - 5

---

The SLC chassis was crowned with the European Innovation Award and features an especially spacious double floor in which all technical components are accommodated, such as plumbing, electrics and heating, as well as the fresh and waste water tank. The double floor can also be accessed and loaded from both inside and outside the vehicle. The double floor also ensures a level upper floor throughout the motorhome.

## **Automotive exterior design meets modern interior concept**

From the outside, the Hymermobil B-Class ModernComfort models stand out thanks to their strikingly automotive appearance. The central, high-quality glossy black radiator grille with optional chrome details immediately catches the eye. The LED fog lights with integrated cornering lights also blend seamlessly into the front design. The visible black diffuser-style garage casing below the rear light moulding echoes the front design to create a harmonious overall effect of sporty elegance.



## Highlights

---

**EXCLUSIVE:** the world's first motorhome to combine the new Sprinter chassis cowl with the award-winning SLC chassis

---

**AN INDUSTRY FIRST:** integrated motorhomes up to 6.99 m in length with a mass in running order under 3 tons

---

Optional payload of 1.5 t with a max. permitted laden mass of 4.5 t

---

Convenient 60-cm-wide entrance door

---

Large 142-l refrigerator as standard

---

Even greater freedom and self-sufficiency thanks to a large 180-l fresh water tank and 150-l waste water tank — even in vehicles under 7 m in length

---

Large loading compartment with external access and extra deep cellar compartment that can be accessed from inside the vehicle

---

36-cm-high multi-purpose double floor with through-loading function, including level living area floor - for extra storage space, improved insulation and total winterproofing as standard

---

Huge garage with a loading height of up to 1.23 m

---

HYMER LED headlight and hybrid rear light

---

# Impressions Hymermobil B-Class ModernComfort I

**Exterior view & stowage compartments**

**Living room**

**Sleeping room**

**Kitchen**

**Bathroom**

Exterior view & stowage compartments



With all the comfort and technology a motorhome has to offer, some people think it's impossible for it to also look good.



The design of the Hymermobil B-Class ModernComfort proves that a practical vehicle can also be visually appealing. The flawless integration of HYMER's own headlights, the inclusion of visible edges and optional design highlights such as a chrome grille give the Hymermobil B-Class ModernComfort its distinctively sleek appearance.



From the outside, the Hymermobil B-Class ModernComfort models stand out thanks to their strikingly automotive appearance.



The striking front design with chrome trim makes the Hymermobil B-Class ModernComfort look just as sporty as it does exclusive.



The visible black diffuser-style garage casing below the rear light moulding echoes the front design to create a harmonious overall effect of sporty elegance. The signature light design with the three bars of the HYMER logo comes with multifunctional rear lights that use LED hybrid technology, which makes them easily visible even in difficult conditions.





One for the photo album: the Hymermobil B-Class ModernComfort impresses with its highly automotive appearance.



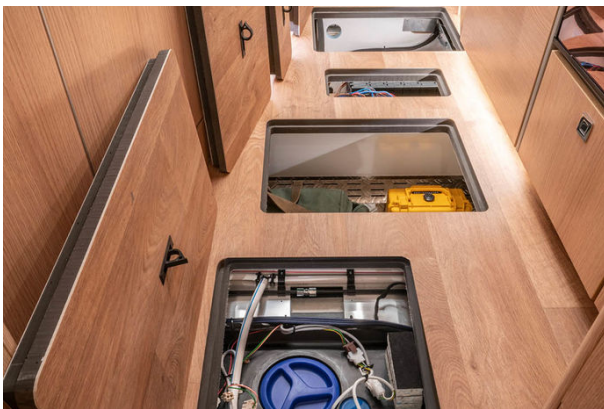
With an inside dimensions of at least 90 x 115 cm, the rear garage of the Hymermobil B-Class ModernComfort offers storage space for everything you need for a long journey.



The garage is equipped as standard with large garage doors on both the right and left side. The standard garage loading capacity is 350 kg, with the option of upgrading to 450 kg.



The spacious loading compartment in the double floor can easily be reached from the outside via large locker doors.



At 36 centimetres in height, the spacious double floor in the SLC chassis provides room for all the necessary technical components, such as plumbing, electrics and heating, as well as the fresh and waste water tank, all of which are optimally protected and insulated against the elements.



A loading compartment that can be easily accessed from both outside and inside the vehicle provides 167 litres of storage space.





Numerous cellar compartments inside the double floor significantly increase the storage space in the Hymermobil B-Class ModernComfort.

## Living room



The interior of the HYMER B-Class ModernComfort boasts a modern, fresh and classy design that conveys



both a feeling of openness and a generous sense of space. This is largely thanks to the new interior design concept based on a slightly angled furniture arrangement, which extends from the cab right through the living area to the sleeping area in the rear of the vehicle and permits a clear view through the motorhome with no interfering contours.



A recess in the rear wall of the washroom allows a 32-inch LED TV to be harmoniously incorporated into the overall design of the ModernComfort 580's living area – and ensures an excellent viewing experience from the driver's seat.



In the integrated Hymermobil B-Class ModernComfort, the fold-down bed above the cab nestles discreetly and harmoniously into the overall design of the open-plan living area.



The optional MBUX multimedia system with 10.25-inch touch screen includes a high-definition display and a wide range of communication and infotainment features. It also features a responsive hard drive navigation system with a clear 3D map.





The modern, linear interior design with strict lines and slightly angled furniture permits a clear view from the front to the rear of the vehicle without interfering contours.



The Hymermobil B-Class ModernComfort impresses thanks to an optimal use of space and a generous sense of roominess.





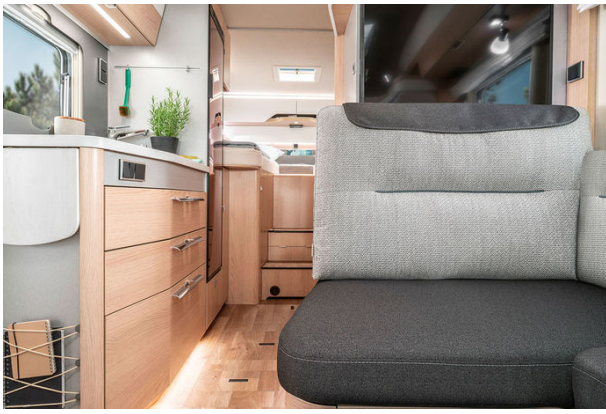
A spacious overhead locker and storage compartments above the seating group of the Hymermobil B-Class ModernComfort make it easy to store all the travel equipment you need for your trip. In addition, less frequently used displays (e.g. the inverter status) are mounted outside the driver's direct field of view, but are still easily accessible.



The optional concertina cab blinds made from premium pleated material protect your motorhome from prying eyes and excessive sunlight in summer.



The optional LED TV with a maximum screen size of 32 inches can be flexibly positioned in front of each seat in the seating area to ensure an optimum viewing experience.



The seating area in the HYMER B Class ModernComfort 580 - shown here in the standard Grand Oak furniture finish with the standard Kitami upholstery.



The seating area in the HYMER B Class ModernComfort 580 - shown here in the standard Grand Oak furniture finish with the standard Colombo upholstery.



The seating area in the HYMER B Class ModernComfort 580 - shown here in the standard Grand Oak furniture finish with the standard Janeiro upholstery.



The seating area in the HYMER B Class ModernComfort 580 - shown here in the standard Grand Oak furniture finish with the optional Phoenix upholstery.



The seating area in the HYMER B Class ModernComfort 580 - shown here in the optional Noce Cognac furniture finish (available at no extra cost) with the standard Delfi upholstery.



The seating area in the HYMER B Class ModernComfort 580 - shown here in the optional Noce Cognac furniture finish (available at no extra cost) with the optional Grazia upholstery in Ecotech material.

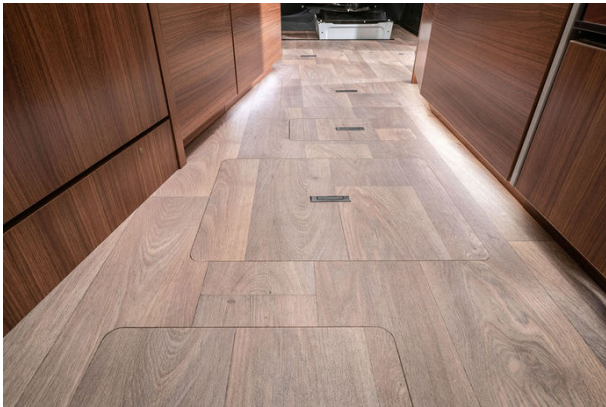




The seating area in the HYMER B Class ModernComfort 580 – shown here in the optional Noce Cognac furniture finish (available at no extra cost) with the optional Creola imitation leather/fabric combination.



The seating area in the HYMER B Class ModernComfort 580 – shown here in the optional Noce Cognac furniture finish (available at no extra cost) with the optional Grigio upholstery in full leather.



This clean look of the interior is underlined by the level living area floor, which can be enhanced throughout the vehicle via indirect lighting in the plinth area.



The plinth lighting is part of the optional ambient lighting package and provides both indirect lighting in the dark as well as an all-round pleasant ambience.



An atmospheric ambiance is created by various LED spotlights and indirect lighting in the Hymermobil B Class ModernComfort I - the plinth lighting in the base of the furniture carcasses is a particular highlight.



Just like your living room at home - for undisturbed privacy, the sleeping and sanitary areas can be carefully separated from the living area in layouts with a bathroom.





The queen-size bed in the Hymermobil B-Class ModernComfort I 690 provides a comfortable berth for two people with a sleeping area of 185/195 x 150 cm. A spacious wardrobe for your holiday clothes is provided on both sides of the bed.

### Sleeping room

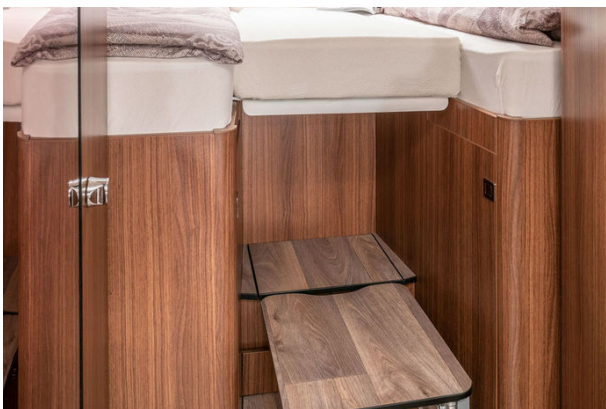




Good news for taller travellers: the twin beds in the 580 layout are available in a length of 2.15 metres in addition to the traditional size of 192 cm by 86 cm. This represents an extraordinary feature in a vehicle with an overall length of less than seven metres.



The generous overhead lockers at the head end of the rear beds offer ample space for clothes, towels, bed linen and reading material. The reading lamps let you bring some light into the darkness and can be controlled individually.



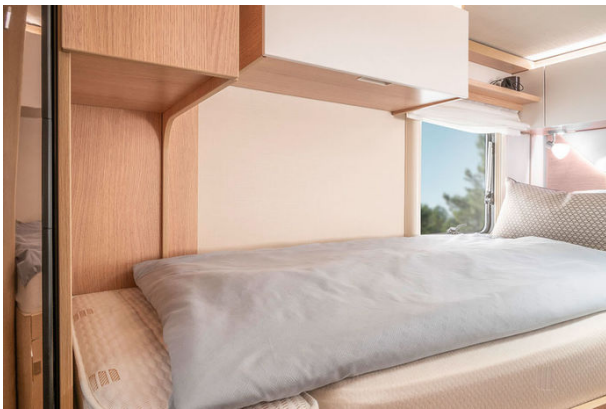
The rear bed can be converted into a large relaxation area with convenient access via the new fold-out steps. The generous comfort steps are equipped with a non-slip coating to match the floor.



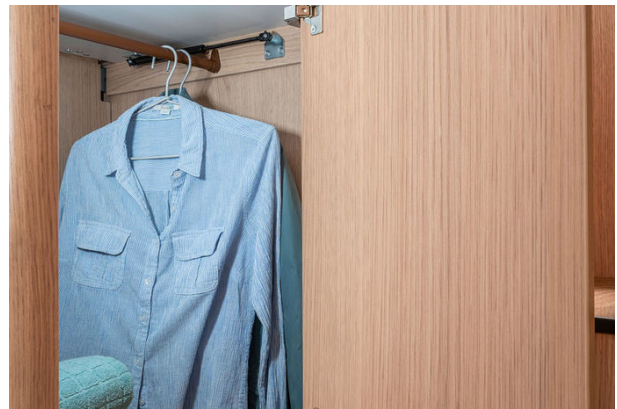
Your holiday outfits can be stored neatly and tidily in the floor-to-ceiling wardrobe, which includes clothes rails and shelf space.



A particular highlight is the optional additional trapezoidal cushion with storage shelf, which can be removed and inserted exactly into the gap between the mattresses. This allows the single beds to be quickly transformed into a large, comfy sleeping surface for two.

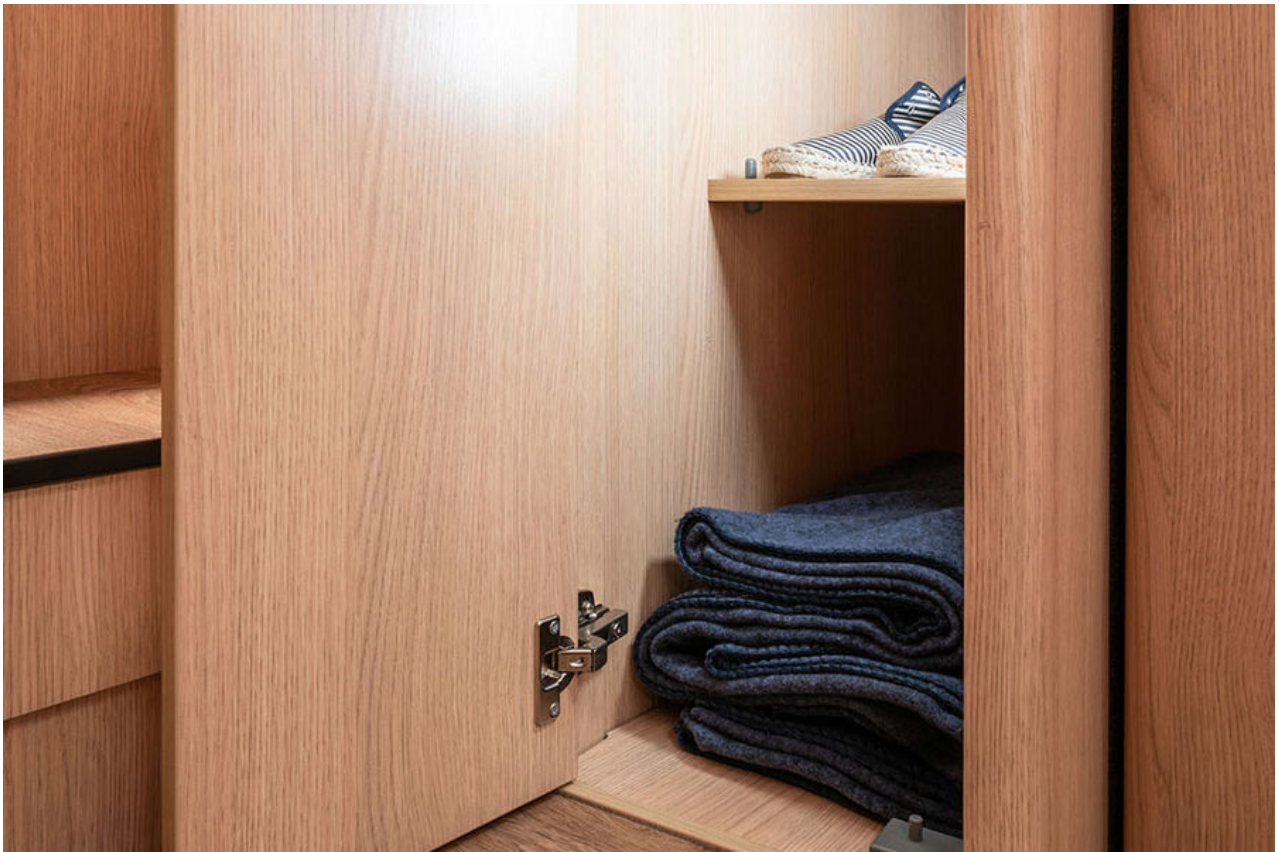


Thanks to a range of optional extras, the Hymermobil B-Class ModernComfort can be tailored to suit the customer's wishes. For example, the twin beds in the 580 layout are available in a 2.15 metre-long version in addition to the standard size of 192 cm by 86 cm - a rarity in a vehicle under seven metres in length.

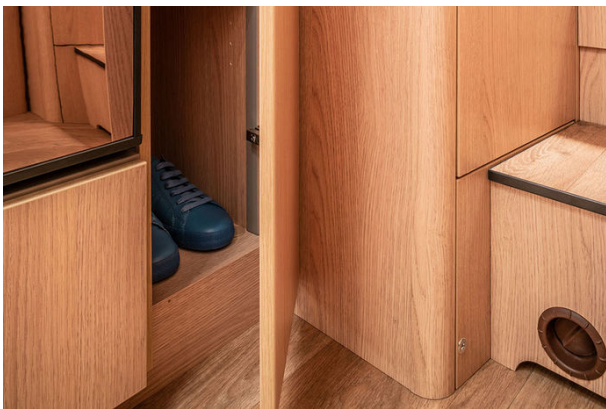


A generous wardrobe is located on both sides under the twin beds in the rear of the vehicle. The wardrobe can be easily accessed either via a door or the folding slatted frame.

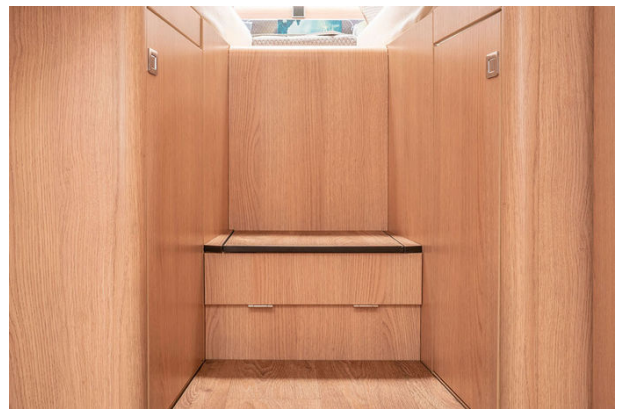




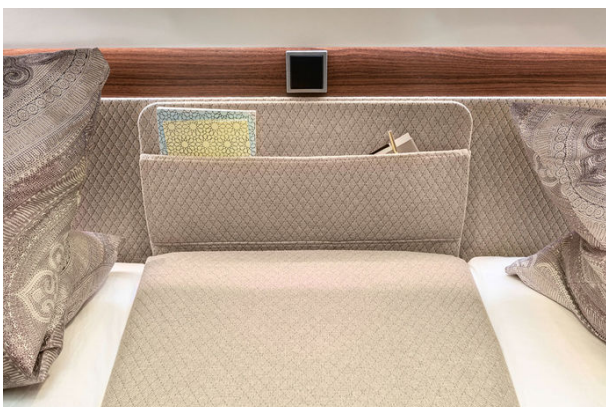
On one side, the wardrobe includes a clothes rail on which garments can be hung cleanly and neatly on hangers. The opposite wardrobe is equipped with a shelf to help keep everything neat and organised.



No space is wasted - there is even additional storage space under the extension for the twin bed in the form of a small cabinet equipped with shelves.



Wide, non-slip steps allow a safe ascent to the twin beds in the rear. Additional storage space is provided under the steps to maximise the use of space inside the vehicle.





A practical utensil bag in the head area between the twin beds lets you keep your bedtime reading close at hand.

The standard clear glass roof vent brings light and fresh air into the Hymermobil's sleeping area.



The doors of the overhead lockers at the foot of the twin beds can be opened extra wide to provide better access and visibility.



A second LED TV with integrated speakers, DVD drive and HYMER Smart Multimedia System with Bluetooth can be ordered as an option for the sleeping area.



The standard fold-down bed above the cab seating provides a sleeping area of 194 x 145 cm with generous headroom. It is optionally available as a version that converts into single beds and includes the Hymer sleep system.

## Kitchen



A 142-litre refrigerator with freezer compartment keeps perishable food crisp and fresh. The slightly angled furniture arrangement is also reflected in individual details, such as the overhead locker doors and the washbasin in the bathroom, resulting in an individual and highly distinctive design.



The elegant kitchen offers plenty of storage space for cookware and provisions thanks to a large overhead locker and extra-wide drawers. The kitchen drawers also close gently and quietly thanks to Servo soft-touch closing mechanisms.



Even if the sink and cooker are in use, the extended worktop provides extra room in which to work. The standard rubbish bin inside the kitchen drawer can be hung on the outside of the drawer when needed to allow easy access. The practical suspension strip on the side of the refrigerator enables the coat hooks to be flexibly arranged as required.

## Bathroom





The comfort bathroom in the HYMER B-Class ModernComfort is separated into two visually distinct areas. One side contains the spacious shower with 1.94-metre headroom, the other the bench toilet plus integrated washbasin and side shelf.



Lashing straps in the bathroom cabinet allow numerous bathroom accessories to be clearly arranged and safely stored. An elevated storage compartment provides space for shampoo bottles, hair spray cans and the like.



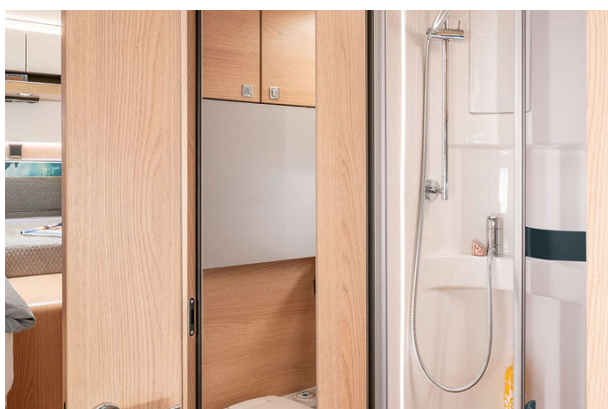
The bathroom cabinets are embedded in the wall to create a modern, linear look.



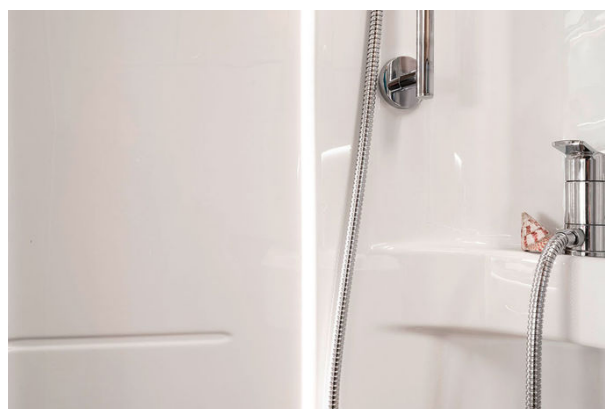
An additional bathroom cabinet is integrated into the slightly sloping wall to the right of the bathroom door - it is also equipped with tensioning straps to keep the contents secure.



There is even a built-in storage compartment for bathroom reading material in the wall next to the bench toilet.



Before leaving the vehicle, you can quickly check your outfit one last time in the floor-to-ceiling mirror mounted on the inside of the bathroom door. The various clothes hooks around the bathroom mean your towels, dressing gowns and the like are always in their proper place.



A strip light integrated into the shower ensures pleasant lighting in the bathroom of the Hymermobil B-Class ModernComfort.

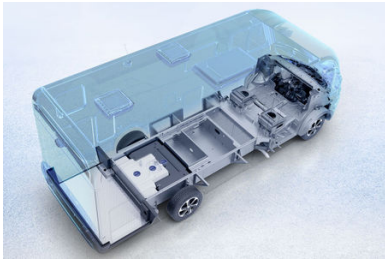
Please note, that for the UK the offered models and equipment components can differ from the descriptions and information given here. The illustrations are for example purposes only, and may feature optional extras, accessories and vehicle decorations which are not supplied as standard. Optional extras are included in the current price list and available at the extra cost indicated. We reserve the right to modify the equipment or make product improvements not shown in the photos during the lifecycle of the model ranges. We cannot accept any liability for content errors and modifications.



# Hymermobil B-Class ModernComfort I - Layouts & Technical Data

# Hymermobil B-Klasse ModernComfort - Standard equipment

The Hymermobil B-Class ModernComfort I comes as standard with an extensive array of equipment as well as superior technology, unique comfort features and brilliant design – putting it miles ahead of other motorhomes.



HYMER SLC chassis

The innovative SLC chassis (Super Light Chassis/Super Lightweight Construction Chassis) features an extra-high, heated and insulated double floor. As a result, the vehicle has even more storage space and a level living area floor. Thanks to its seamlessly level underbody, the SLC chassis increases driving stability and provides superior aerodynamics.



Stay on track even in windy conditions

The Crosswind Assist is fitted as standard and helps keep the vehicle in lane in strong winds thanks to automatic braking interventions.



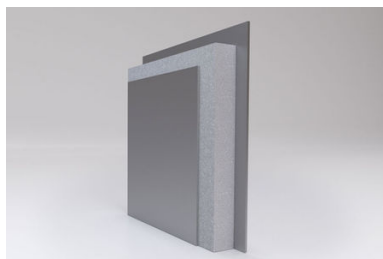
LED headlights

The new, internally developed HYMER headlights include modern LED fibre optics with integrated daytime running lights and indicators to ensure optimum visibility day and night. This ensures perfect illumination in traffic, making you even safer as a result.



Perfect, all-round visibility

The panoramic windscreen with the large side windows has been greatly improved thanks to targeted studies into the field of vision. This gives you a perfect view of obstacles – as well as road signs and traffic lights – from the driver's seat. The suspended wide-angle wing mirrors ensure excellent rear visibility without restricting the view diagonally ahead.



Optimum insulation

The PUAL-foamed walls with aluminium interior and exterior skin are an important component of the vehicle's durable high-tech bodywork. The excellent insulation of the closed-pore PU foam guarantees pleasant temperatures throughout the year and low gas consumption in winter.



Level underbody

The completely level underbody improves the vehicle's aerodynamics, thereby minimising both fuel consumption and noise levels.





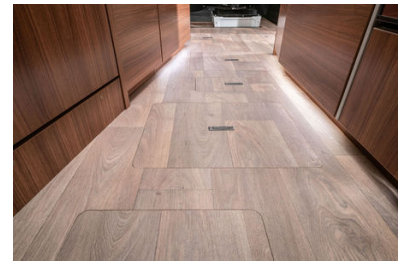
Rear light in striking design

The multifunctional rear lights include LED hybrid technology and a signature design featuring the three bars of the HYMER logo - and provide excellent visibility even in challenging conditions.



Mercedes-Benz Sprinter chassis cowl

The Hymermobil B-Class ModernComfort is the first motorhome to feature the newly developed Mercedes-Benz Sprinter chassis cowl. This provides a powerful heart for the vehicle - with 143 hp as standard for high-torque acceleration and optimal power transmission.



Level living area floor

The living area floor in the Hymermobil B-Class ModernComfort is level throughout the vehicle and therefore free from tripping hazards.



Thermal compartments in the double floor

Numerous heated cellar compartments inside the double floor provide additional storage space that is protected from both the heat and cold.



Practical loading compartment

A large, extra-deep cellar compartment is accessible from both outside and inside the motorhome to ensure easy loading.



Concertina cab blinds

The optional concertina cab blinds made from premium pleated material protect your motorhome from prying eyes and excessive sunlight in summer.



Natural light

The large HYMER panoramic roof vent in the living area of the Hymermobil B-Class ModernComfort lets in plenty of daylight to create a pleasant, natural ambience in the motorhome's interior. And when it gets dark, uniform lighting is provided by the integrated LED



Double-sided garage access

The rear garage of the Hymermobil B-Class ModernComfort is equipped with two large garage doors as standard - one each on the left and right side. The garage can carry a maximum payload of 350 kg as standard - a 450 kg version is available as an option.



Multifunctional comfort

The height and angle-adjustable swivel cab seats are fully upholstered in the same fabric design as the living area. Their exceptional seating comfort and tiltable arm rests are ideal for settling down to watch TV and for relaxed driving.

spotlights.



Comfortable front berth

The fold-down bed above the cab also offers maximum freedom of movement and headroom. It offers a comfortable sleeping space extending across the entire width of 1.45 metres – even in the front part of the vehicle.



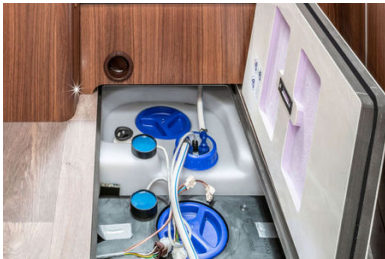
Versatile table

For additional flexibility, the luxury table in the Hymermobil B-Class ModernComfort can be rotated 360° and adjusted both horizontally and lengthways as required.



Energy-saving LEDs

The interior lighting throughout the motorhome features LED technology as standard. This cuts energy consumption by 75% and gives you hours of extra battery life. Since LEDs don't get hot, this also improves fire and accident safety.



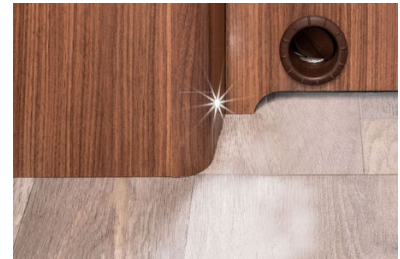
High-capacity water tank

The fresh water capacity has been increased to an impressive 180 litres and the waste water tank holds 150 litres – for more convenience and greater self-sufficiency. The tanks are protected inside the insulated and heated double floor, and can be conveniently accessed from the inside the vehicle.



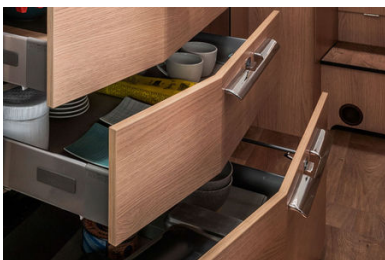
Space for chilling

As standard, the kitchen of the Hymermobil B-Class ModernComfort is equipped with a 142-litre Smart-Tower refrigerator to keep your drinks nicely chilled even in summer.



Signposts in the dark

The standard night lights in the plinth area help you find your way around the van in the dark without waking fellow travellers with bright lights, e.g. when going to the toilet.



Safe handling

All kitchen drawers are equipped with roller bearings for ultra-smooth action. They feature high-quality Servo soft-touch closing mechanisms and



one-handed push-locks that  
prevent the drawers from  
opening and rattling when the  
Hymermobil B-Class  
ModernComfort is on the move.

Please note, that for the UK the offered models and equipment components can differ from the descriptions and information given here. The illustrations are for example purposes only, and may feature optional extras, accessories and vehicle decorations which are not supplied as standard. Optional extras are included in the current price list and available at the extra cost indicated. We reserve the right to modify the equipment or make product improvements not shown in the photos during the lifecycle of the model ranges. We cannot accept any liability for content errors and modifications.

# Hymermobil B-Class ModernComfort I - Optional extras

For an even more comfortable and exclusive experience while travelling, your Hymermobil B-Class ModernComfort I can be upgraded with a number of optional extras.



For economical and smooth driving

The optional, fuel-efficient 9G-TRONIC 9-speed automatic transmission including hold function makes driving a sprightly experience with optimal smooth running and low fuel consumption.



Premium leather steering wheel

The Hymermobil B-Class ModernComfort is optionally available with an exquisite leather steering wheel. In vehicles with a manual gearbox the gear stick is also finished in leather.



Modern multimedia system

The optional MBUX multimedia system is available with either a 7" or 10.25" touchscreen. It has a high-definition display and offers a wide range of communication and infotainment features, as well as a reversing camera. The 10.25" system also features a responsive hard drive navigation system with a clear 3D map. This can be ordered as an optional extra for the 7" system.



Practical sliding shelf for gas bottles

For even greater convenience when changing gas cylinders, an optional sliding shelf for the gas cylinders including a separate gas locker door is available for 580 layout.



Comfort entrance door

The optional comfort entrance door is equipped with a window with a blackout blind and includes an integrated dustbin as well as a double lock.



Pleasant ambience

The Hymermobil B-Class ModernComfort can be optionally equipped with an ambient lighting package, which ensures pleasant indirect light via the overhead storage cupboards and plinth lighting under the furniture.





#### Protection from sun and drizzle

A 4.5 or 5-metre awning with adapter and a white or silver housing is optionally available.



#### Optimal leak-tightness

The roof of the Hymermobil B-Class ModernComfort is made from robust aluminium and has no longitudinal seams through which water can penetrate from above. The optional GRP coating provides additional weather and hail protection, preventing mechanical damage to the roof surface.



#### XXL bed

For the 580 layout, a 23-cm-longer XXL bed is available as an option. At 2.15 metres, a bed of this size is a rarity in a vehicle under seven metres in length.



#### HYMER Smart Battery System

The HYMER Smart Battery System enables you to drastically increase the period of self-sufficiency of your vehicle. This results in the vehicle being able to stand without a power connection for almost 10 days. This is ideal for customers who enjoy a high degree of independence.



#### TV in the sleeping area

Optionally, the sleeping area can be equipped with a second, 22-inch LED TV. The TV features built-in speakers, a DVD drive and the HYMER Smart Multimedia System with Bluetooth.



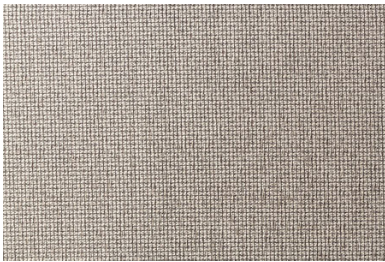
#### High-tech in the kitchen

The practical Caprice combined hob and oven offers home-from-home convenience when cooking. Its versatile range of functions lets you bake, grill and boil to your heart's content!

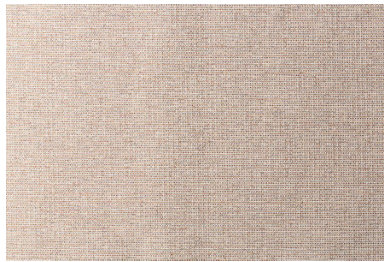
# Hymermobil B-Class ModernComfort I | Furniture finish, fabric design & carpets

The interior at a glance.

## Overview of upholstery materials



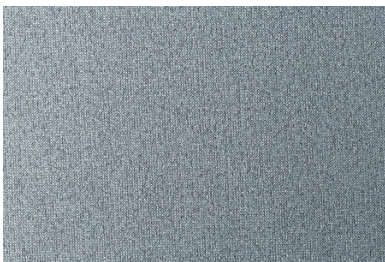
Delfi / Plain fabric  
(Standard equipment)



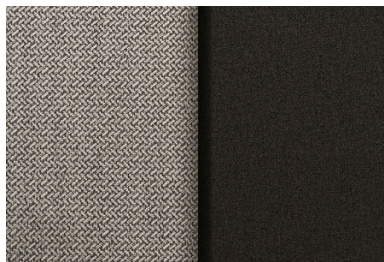
CUSCO / Plain fabric  
(Standard equipment)



Janeiro / Plain fabric  
(Standard equipment)



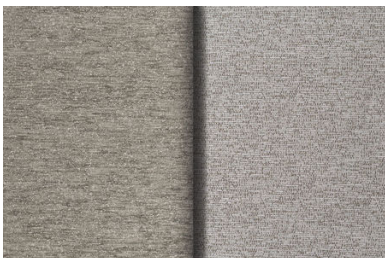
Milos / Plain fabric  
(Standard equipment)



Kitami /Textile  
(Standard equipment)



Colombo / Plain fabric  
(Standard equipment)



Phoenix / Plain fabric  
(Optional extra)

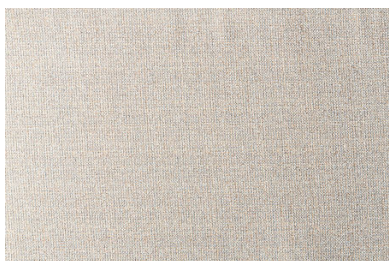


Milano / Plain fabric  
(Optional extra)



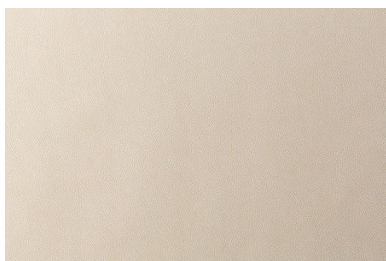
Cristallo / Plain fabric  
(Optional extra)





Aruba / Plain fabric

(Optional extra)



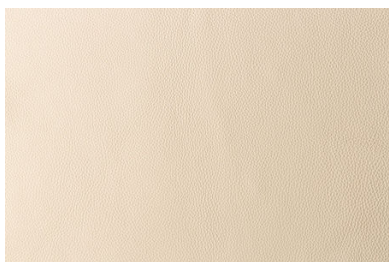
Grazia / Ecotech

(Optional extra)



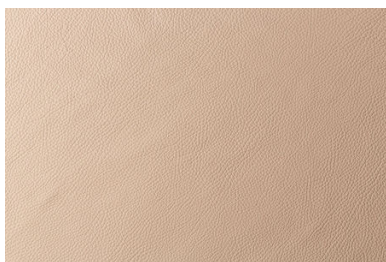
Dalana / Imitation leather

(Optional extra)



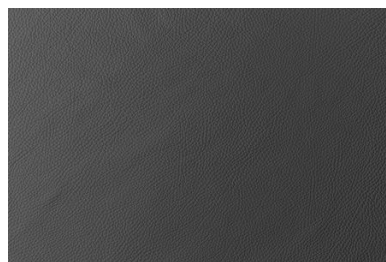
Napoli / Full leather

(Optional extra)



Tortora / Full leather

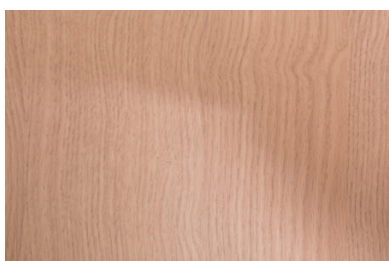
(Optional extra)



Grigio / Full leather

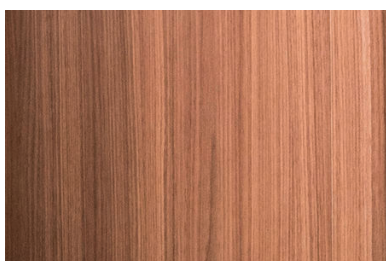
(Optional extra)

## Wood finish



Grand Oak

(Standard equipment)



Noce Cognac

(Available upon request - free of charge)